



Terex Franna AT-15



MAXIMUM
CAPACITY
15T



MAXIMUM
BOOM LENGTH
17.9M

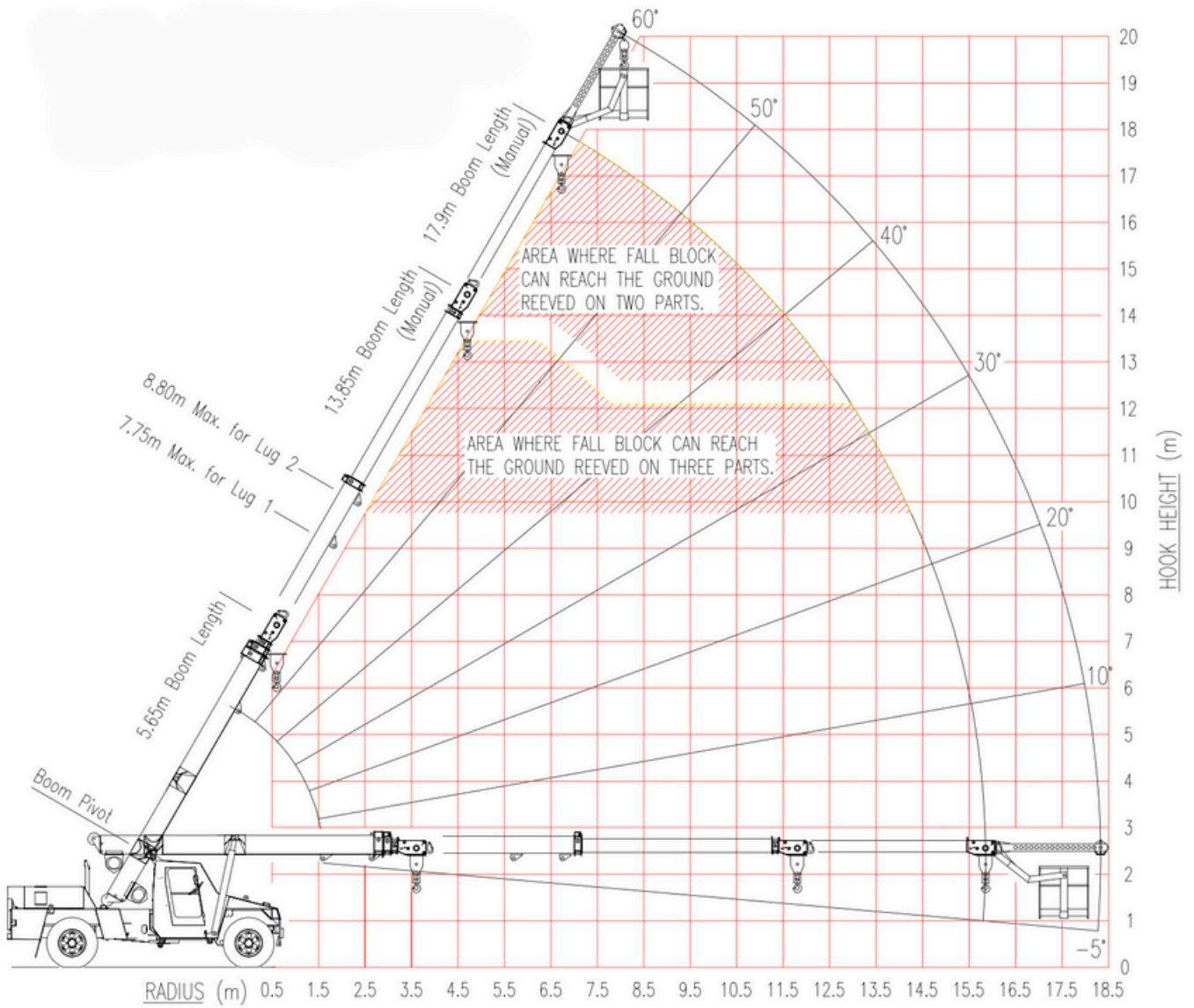


0474 352 276



www.dlbcranes.com.au

Radius Load Chart



Rated Capacity

RADIUS	BOOM LENGTH (m)																	
	5.66	6.00	6.50	7.00	7.50	8.00	8.50	9.00	9.50	10.00	10.50	11.00	11.50	12.00	12.50	13.00	13.50	13.86
1.6	10500	10500	10500	10500	10500													
	48	50	54	57	59													
2.0	10500	10500	10500	10500	10500	10500	10500											
	42	46	50	53	56	58	60											
2.5	10400	10350	10350	10350	10350	10350	10350	9950	9650									
	34	39	44	48	51	54	56	58	60									
3.0	8500	8500	8500	8500	8500	8500	8500	8500	8500	8300	7350							
	25	31	37	42	46	49	52	55	57	58	60							
3.5	7200	7200	7200	7200	7200	7200	7150	7150	7150	6750	5950	5650						
	9	20	30	36	41	45	48	51	53	55	57	59	60					
4.0	6950	6250	6200	6200	6200	6200	6200	6200	6150	6150	5500	5250	5000	4800				
	(3.61)	(3.95)	20	28	35	39	43	46	49	52	54	56	57	59	60			
4.5			5450	5400	5400	5400	5400	5400	5400	5400	5400	5150	4900	4650	4500	4300	4150	
			(4.45)	19	28	34	38	42	45	48	50	52	54	56	57	59	60	
5.0			4850	4800	4800	4800	4800	4800	4800	4800	4800	4800	4550	4350	4200	4050	3900	3800
			(4.95)	18	27	33	37	41	44	47	49	51	53	55	56	58	59	
6.0			4300	4250	4250	4250	4250	4250	4250	4250	4250	4250	4250	4200	4200	4050	3900	3800
			(5.45)	(5.95)	17	25	31	35	39	42	45	47	49	51	52	54	54	
7.0					3550	3200	3200	3200	3200	3200	3200	3200	3200	3200	3200	3050	2950	2850
					(6.45)	(6.95)	16	24	29	34	37	40	43	45	47	48	48	
8.0							2950	2700	2700	2700	2700	2700	2700	2700	2700	2700	2650	2600
							(7.45)	(7.95)	16	23	28	32	36	38	41	43	43	
9.0									2500	2300	2300	2300	2300	2300	2300	2300	2300	2300
									(8.45)	(8.95)	15	22	27	31	34	36	36	
10.0											2150	2000	2000	2000	2000	2000	2000	2000
											(9.45)	(9.95)	14	21	26	29	29	
11.0													1900	1750	1750	1750	1750	1750
													(10.45)	(10.95)	14	19	19	
11.81																1650	1550	1550
																(11.45)	(11.81)	1350

MANUAL EXT'N	
MAX LENGTH 17.91	
MAX RADIUS	SWL
6.72	1850
	60
	1600
9.29	1600
	50
	1300
11.53	1300
	40
	1150
13.35	1150
	30
	1050
14.70	1050
	20
	1050
15.54	950
	10
	1050
15.86	950
	0

- SWL (KG) LESS THAN 10 DEG ARTICULATION
- SWL (KG) GREATER THAN 10 DEG ARTICULATION
- BOOM ANGLE OR (RADIUS AT 0 DEG BOOM ANGLE)

Weight of slings & hook block to be added to load
 Read and understand warning notes before operating crane
 Loads above bold red line are structural

NOTE :
 17.9m Boom length includes Manual 3rd extension.
 Ratios for Manual extension are structural & based on Boom Angle, not radius. The ratios do not change if the power sections are retracted with the manual extended.

