



Terex Franna AT-20



MAXIMUM
CAPACITY
20T



MAXIMUM
BOOM LENGTH
17.9M

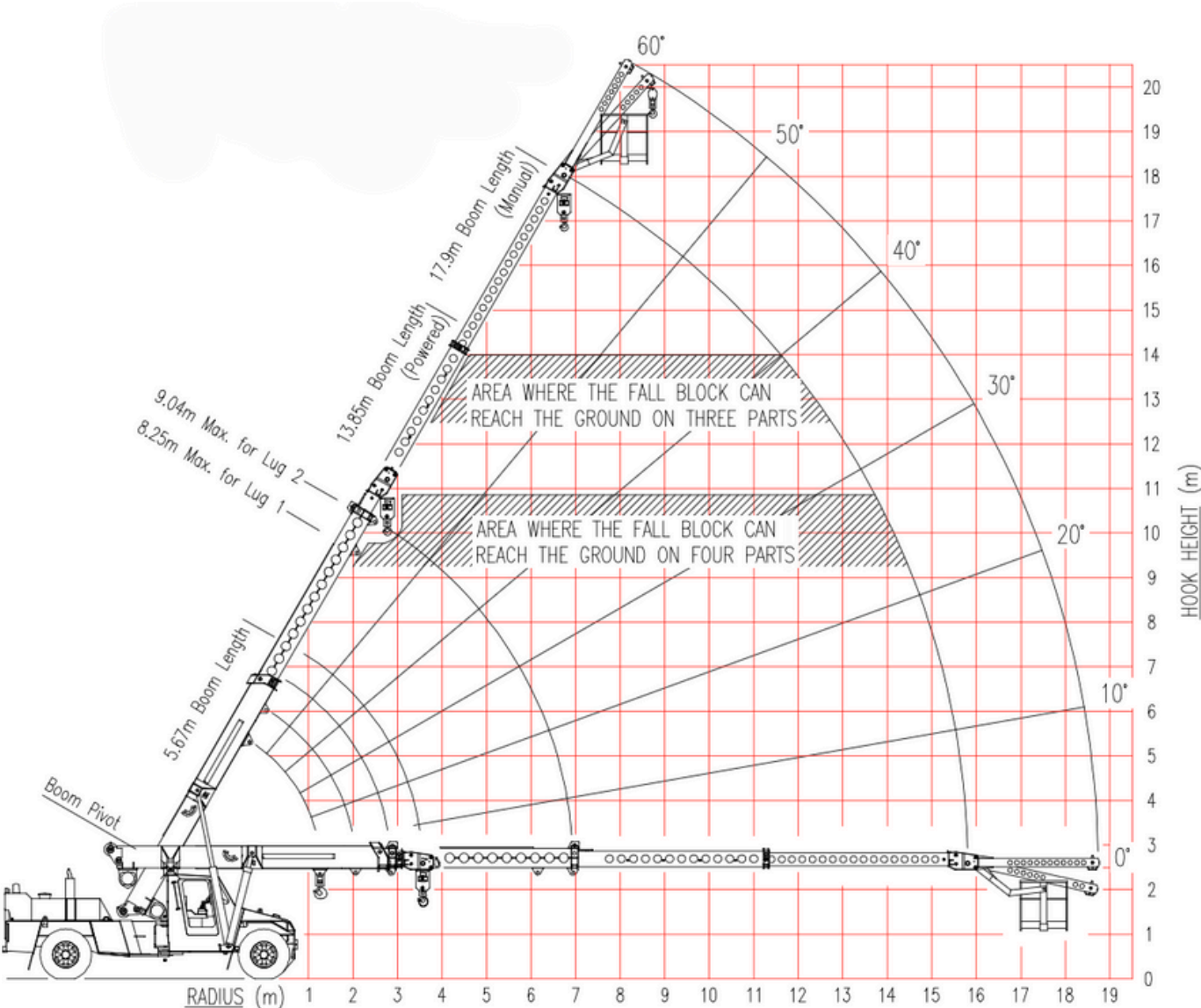


0474 352 276



www.dlbcranes.com.au

Radius Load Chart



Rated Capacity

RADIUS	BOOM LENGTH (m)																			
	5.67	6.00	6.50	7.00	7.50	8.00	8.50	9.00	9.50	10.00	10.50	11.00	11.50	12.00	12.50	13.00	13.50	13.85		
1.6	16800	16250	15450	14900																
	12600	12600	12600	12600																
2.0	48	51	54	57																
	16800	16800	16500	15700	15100	14700	14350													
2.5	12600	12600	12600	12600	12600	12600	12600													
	42	46	50	53	56	58	60													
3.0	13900	13900	13900	13850	13850	13850	13850	13200	13000											
	12150	12150	12100	12100	12100	12100	12100	12050	12050											
3.5	34	39	44	48	51	54	56	58	60											
	11450	11450	11450	11400	11400	11400	11400	11400	11400	11150	10250									
4.0	9950	9950	9950	9950	9950	9950	9900	9900	9900	9900	9900									
	25	31	37	42	46	49	52	55	57	59	60									
4.5	9650	9650	9650	9650	9650	9650	9650	9650	9650	9650	9500	8150	7500							
	8	20	29	36	41	45	48	51	53	55	57	59	60							
5.0	8400	8400	8400	8400	8400	8400	8400	8400	8350	8350	8350	8150	7500							
	8200	7450	7250	7250	7250	7250	7250	7250	7200	7200	7200	7000	6700	6450						
5.5	(3.57)	(3.90)	19	28	35	39	43	47	49	52	54	56	57	59	60					
			7500	7300	7300	7300	7300	7300	7300	7300	7300	7150	6550	6250	6050	5800	5650			
6.0			6500	6350	6350	6350	6350	6350	6300	6300	6300	6300	6300	6250	6050	5800	5650			
			(4.40)	19	27	34	38	42	45	48	50	52	54	56	58	59	60			
6.5			6650	6500	6500	6500	6500	6500	6500	6500	6500	6500	6500	6150	5900	5650	5450	5300	5150	
			5750	5600	5600	5600	5600	5600	5600	5600	5600	5600	5600	5600	5600	5600	5450	5300	5150	
7.0			(4.90)	18	27	33	37	41	44	47	49	51	53	55	56	58	59			
				5950	5350	5250	5250	5250	5250	5250	5250	5250	5250	5250	5050	4850	4700	4600		
7.5				5100	4600	4550	4550	4550	4550	4500	4500	4500	4500	4500	4500	4500	4500	4500	4500	
				(5.40)	(5.90)	17	25	31	35	39	42	45	47	49	51	53	54			
8.0						4850	4450	4400	4400	4400	4400	4400	4400	4350	4350	4350	4200	3950		
						4200	3800	3750	3750	3750	3750	3750	3750	3750	3750	3750	3750	3750	3750	
8.5						(6.40)	(6.90)	16	24	29	34	37	40	43	45	47	48			
								4100	3750	3700	3700	3700	3700	3700	3700	3700	3700	3600		
9.0								3500	3200	3150	3150	3150	3150	3150	3150	3150	3150	3150	3150	
								(7.40)	(7.90)	15	23	28	32	36	38	41	43			
9.5										3500	3250	3200	3200	3200	3200	3200	3200	3200	3200	
										2950	2750	2700	2700	2700	2700	2700	2700	2700	2700	
10.0										(8.40)	(8.90)	15	22	27	31	34	36			
												3000	2800	2800	2800	2800	2800	2800	2800	
10.5												2550	2400	2350	2350	2350	2350	2350	2350	
												(9.40)	(9.90)	14	21	26	29			
11.0														2650	2500	2450	2450	2450	2450	
														2200	2100	2050	2050	2050	2050	
11.75														(10.40)	(10.90)	13	18			
																2350	2250	1950	1850	
																(11.40)	(11.75)			

MANUAL EXT'N	
MAX LENGTH 17.90	
MAX RADIUS	SWL
6.74	2550
	60
	2250
9.31	2250
	50
	2050
11.53	2050
	40
	1900
13.34	1700
	30
	1800
14.67	1500
	20
	1650
15.51	1350
	10
	1600
15.80	1300
	0

- SWL (KG) LESS THAN 10 DEG ARTICULATION
- SWL (KG) GREATER THAN 10 DEG ARTICULATION
- BOOM ANGLE OR (RADIUS AT 0 DEG BOOM ANGLE)

Weight of slings & hook block to be added to load
 Read and understand warning notes before operating crane
 Loads above bold red line are structural

NOTE :
 17.9m Boom length includes Manual 3rd extension.
 Ratings for Manual extension are structural & based on Boom Angle, not radius. The ratings do not change if the power sections are retracted with the manual extended.

